



SPEED | STRENGTH | SAFETY

A REVOLUTIONARY AND POWERFUL AQUEOUS PARTS WASHING MACHINE THAT COMBINES THE TRIPLE-ACTION CLEANING POWER OF HEAT, CHEMISTRY AND PRESSURE FOR SUPERIOR RESULTS.



TORRENT PRODUCT SOLUTIONS

AN ENVIRONMENTALLY FRIENDLIER COMBINATION OF HEAT, PRESSURE & CHEMISTRY - Unlike traditional partswashers that use petroleum or chlorinated solvents, Torrent uses a water-based surfactant blend. This unique, solvent-free approach to parts washing reduces employee risk while cleaning 90% of parts within one minute.

- Cleans hard-to-reach points with heat and pressure
- Up to 5 times faster than traditional automatic parts cleaning
- Up to 8 times faster than solvent-based manual washing
- Safer, solvent-free solution

⊕ SAFER PARTS CLEANING

⊕ SUPERIOR PERFORMANCE

⊕ ECONOMICAL OPERATION

SAFER PARTS CLEANING

Torrents are more cost effective, safer and faster compared to solvent-based parts washers. With the Torrent your staff will no longer be exposed to flammable solvents.

SUPERIOR PERFORMANCE

Torrents combine the joint action of pressure, temperature, and chemistry to work five-times faster than automatic machines. Torrent's unique design clean where an automatic machine cannot. Powerful cleaning solution & corrosion inhibitors allows for the safe washing of all metals and materials.

ECONOMICAL OPERATION

Time and time again, a Torrent proves more cost effective than traditional parts washers. In addition to better performance, Torrents cut hazardous waste costs by eliminating the use of solvent-based chemicals. Torrent also reduces labor costs by virtually eliminating the need for secondary cleaning with aerosols.

THE TORRENT DIFFERENCE

TRADITIONAL PARTS WASHERS - THE PROBLEM

- Generally unsafe to use and require PPE due to exposure and splash back of solvents.
- Cleaning time is increased due to slow manual parts washing with a brush - required for hard-to-reach parts.
- Not environmentally-friendly.
- Typically lower pressure - resulting in inefficient cleaning of parts



TORRENT - THE SOLUTION

- Improved productivity
- Pressure, temperature and chemistry for a faster cleaning
- Reduces the need for flammable solvents
- Lowers labor costs
- Reduces secondary cleaning with aerosols
- Sealed wash area creates a safer user experience
- Reduces exposure to harmful solvents
- Washes all parts safely



PRODUCT SOLUTIONS



FEATURES & BENEFITS

THE TORRENT SYSTEM IS A UNIQUE PARTS WASHING SOLUTION THAT STANDS OUT IN THE MARKET PLACE. THE TORRENT COMBINES THE TRIPLE-ACTION CLEANING POWER OF HEAT, CHEMISTRY AND PRESSURE FOR SUPERIOR RESULTS.

ACTION 1 - HEAT

The aqueous cleaning solution is heated to 131° F, activating the aqueous cleaners and loosening oils and greases.

ACTION 2 - CHEMISTRY

The aqueous cleaning chemistry is safer for users, produces zero VOCs and lifts deposits from the dirtiest parts. It also leaves behind a rust inhibitor for maximum protection of your cleaned parts.

ACTION 3 - PRESSURE

Tough deposits are blasted away by the pressure of the Torrent parts washer, which is 10 times more powerful than other cabinet washers. The distinct advantage is that the pressure and solution can be directed by the user into all nooks and crannies that other cabinet washers can't handle.

MACHINE FEATURES

Enclosed Spray Area - The sink on the upper half of the machine is an enclosed area where parts are washed. While the parts are inside, the operator is safely cleaning while looking through a sealed window. With this feature, you will have no harmful chemicals or splashing water getting on your work clothes or getting in your eyes.

Water Nozzle & Air Blower - The water nozzle is powered by a recirculating pump that sprays water through the movable nozzle at 450 psi. This nozzle is activated by a foot pedal and allows the user to direct the high-pressure, water-based cleaning solution into the nooks and crannies of the parts being washed. The hand-activated air blower releases a jet stream of compressed air at 90 to 150 psi to dry and remove any loose debris or soils from the parts after being washed.

LED Light - Multiple diodes create a bright interior cabinet. The enclosed light housing stays clean so the work area never gets dim. The high luminosity means you can see the dirt and grime wash away.

Front Lid - The lid has an integrated viewing window to allow proper visibility during use and two integrated glove ports that allow the user to handle the nozzle, air blower and the parts being cleaned while protecting the user's hands.

Gloves - Fully coated nitrile gloves allow the operator to safely handle parts while being washed, and protect the user from all grease and grime. Additionally, the roughened textured grip and anatomical shape provide comfort for extended use and good mechanical resistance.

Lid Safety Sensor - The lid includes a sensor on the upper right side that does not allow the Torrent to be operated for safety reasons when the lid is open. This sensor deactivates the spray nozzle, air knife and pump; preventing improper use while the lid is open. This is one of the many safety features built into the Torrent.



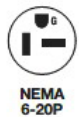
PRODUCT SOLUTIONS

TORRENT 500

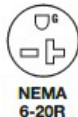
AVAILABLE IN 115 VOLT & 230 VOLT CONFIGURATIONS

Maximum Height (open lid):	89 in
Minimum Height (closed lid):	63.4 in
Sink Dimensions (H X W X D, lid):	21.65" x 25.59" x 19.69"
Max. Sink Tray Load:	110 lbs
Drum Fill Capacity:	30.38 gallons
Operational Liquid Level - min/max:	16 - 26.5 gallons
Overall Dimensions (H X W X D):	89.13" x 36.53" x 30.16" (open lid)
Weight:	265 lbs
Nationally Recognized Testing Laboratory (NRTL) Approval:	ETL
Voltage:	230V or 115V
Current Rating:	9A (230V) or 14A(115V)
Pump Motor:	2 HP
Immersion Heater:	1 KW(115v) / 2 KW(230v)
Temperature:	Up to 131°F
Spraying Pressure:	450 psi (31 bar)
Required Air Pressure:	90 - 150 psi (6.2-10.3 bar)
Pump Capacity:	2.11 gal/min
Cleaning Solution pH:	10.5-11 (when diluted)
Required Power:	115v must have a dedicated 20A circuit

230V PLUG & RECEPTACLE INFORMATION PS5466-X Straight blade 2 Pole 3 Wire Grounded



Nema 6-20P Plug.



Nema 6-20R



Scan for more information on the Torrent 500

WHO WE WORK WITH

- AK Steel
- USS
- Safran
- American Airlines
- CAT
- AVIALLA
- Union Pacific
- John Deere
- Waste Management
- Waste Connections Inc.
- Lexus
- Toyota
- Chrysler
- Baker Hughes
- and more...



TORRENT 700

AVAILABLE IN 115 VOLT & 230 VOLT CONFIGURATIONS

Maximum Height (open lid):	92 in
Minimum Height (closed lid):	65 in
Sink Dimensions (H X W X D, lid):	20.87" x 41.34" x 28.35"
Max. Sink Tray Load:	250 lbs w /turntable - 180 lbs without turntable
Drum Fill Capacity:	30.38 gallons
Operational Liquid Level - min/max:	16 - 26.5 gallons
Overall Dimensions (H X W X D):	91.73" x 53.15" x 37" (open lid)
Weight:	331 lbs
Nationally Recognized	
Testing Laboratory (NRTL) Approval:	ETL
Voltage:	230V or 115V
Current Rating:	9A (230V) or 14A(115V)
Pump Motor:	2 HP
Immersion Heater:	1 KW(115v) / 2 KW(230v)
Temperature:	Up to 131°F
Spraying Pressure:	450 psi (31 bar)
Required Air Pressure:	90 - 150 psi (6.2-10.3 bar)
Pump Capacity:	2.11 gal/min
Cleaning Solution pH:	10.5-11 (when diluted)
Required Power:	115v must have a dedicated 20A circuit

230V PLUG & RECEPTACLE INFORMATION

PS5466-X Straight blade 2 Pole 3 Wire Grounded



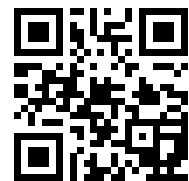
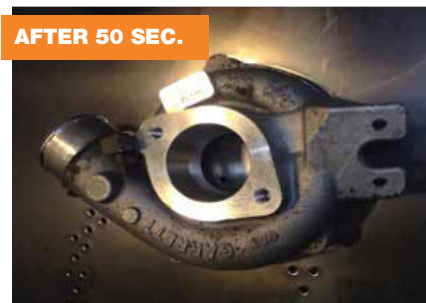
NEMA
6-20P

Nema 6-20P Plug.



NEMA
6-20R

Nema 6-20R



Scan for more
information on the
Torrent 700

PRODUCT SOLUTIONS

LAWSON™ TORRENT 1101

AQUEOUS PARTS CLEANING SOLUTION

DY60110101

SUPERIOR DESIGN

- Delivers superior cleaning with zero VOCs
- Cleans multiple oils - from light oils to carbon
- Cleans multiple metals - including aluminum and titanium
- Spray wash & immersion applications - simple to use, easier to train
- Torrent 1101 cleaning solution contains a minimal amount of rust inhibitor that prevents flash rusting of parts.

SAFER FOR THE USER, BETTER FOR THE ENVIRONMENT

- No SARA Title III, Section 313 reportable
- No Ozone Depleting Substances
- No Global Warming Potential
- No CERCLA reportable
- No Glycol Ethers
- No APs (Alkylphenols) or APEs (Alkylphenol Ethoxylates)
- No Chelants
- No Butyl
- No VOCs
- Nonflammable
- RoHS compliant
- NSF Registered
- Compatible with environmentally preferable purchasing programs



BRULIN AQUAVANTAGE

AVIATION SPRAY WASH DETERGENT

5 GALLONS

DY60119905 – 1990 GD

- Aviation-grade spray wash
- Mildly alkaline solution
- Safe on virtually all metals
- Noncorrosive
- Meets several aviation standards (refer to label for complete list)

DY60100050 – 3887 GD

- High Performance
- In-process Corrosion Control
- Low foaming
- Free rinsing
- Meets several aviation standards (refer to label for complete list)





5 REASONS WHY YOU NEED A TORRENT PARTS WASHER

POWERFUL PERFORMANCE

It takes ONLY 60 seconds to clean off stubborn grease and grime

ENVIRONMENTALLY FRIENDLY

Minimizes the use of solvent-based cleaners, helping users achieve ISO goals.

SAFETY

The Torrent eliminates fire hazards in the workplace by using a water-based solution. Reduces employee exposure to harmful chemicals.

INCREASED PRODUCTIVITY

The Torrent is super quick and easy to use with no mess and no fuss. Gives employees time for more important jobs.

IT REALLY WORKS

Revolutionary water-based parts cleaning that has proven performance and cleaning results. More than 8,600 satisfied customers worldwide

The Torrent has proven its success with efficiency and safety with multiple CAT locations across the world. The cost savings from less labor required cleaning parts averages \$20,000+ for each torrent that replaces 2 or more solvent washers.

- ENGINE REBUILD
- ENGINE REMAN SHOPS
- TRUCK SHOPS
- COMPONENT SHOPS
- RENTAL CENTERS
- HEAVY EQUIPMENT
- POWER SYSTEMS



BEFORE



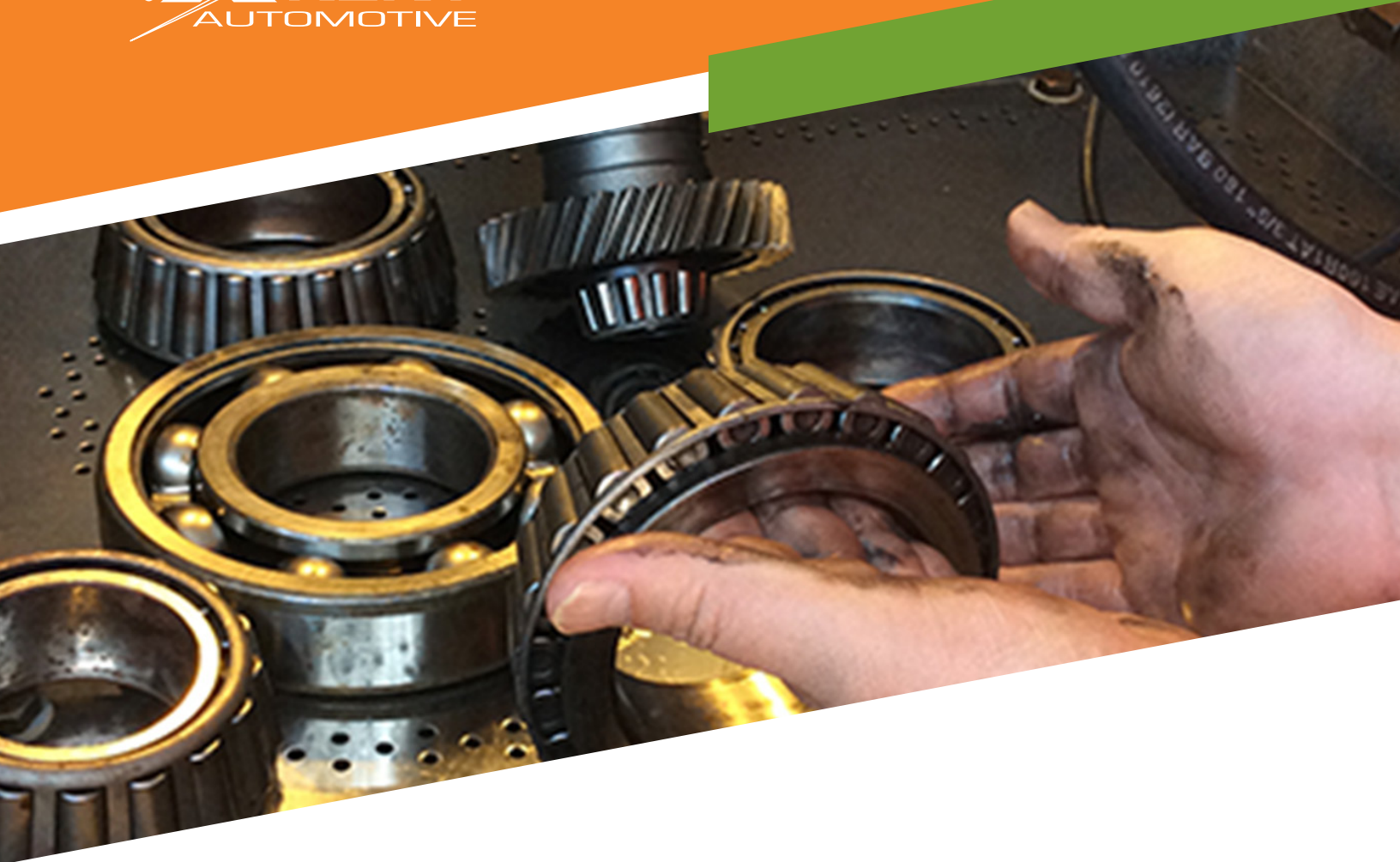
AFTER



BEFORE



AFTER



KENT AUTOMOTIVE
UNITED STATES

8770 W. Bryn Mawr Ave., Suite 900, Chicago, IL 60631-3515
USA: 888.YES.KENT (888.937.5368). Canada: 800.563.1717

KENT-AUTOMOTIVE.COM